

# EuroPHit\_OP25\_IGPH\_Stacken\_Sweden

Scale 1:10 @ A4

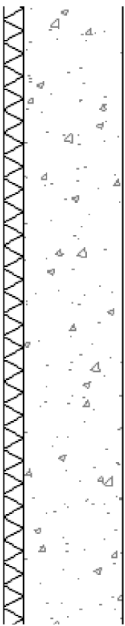
Author Ingo Theoboldt

Date



External wall - insulation and BIPV facade

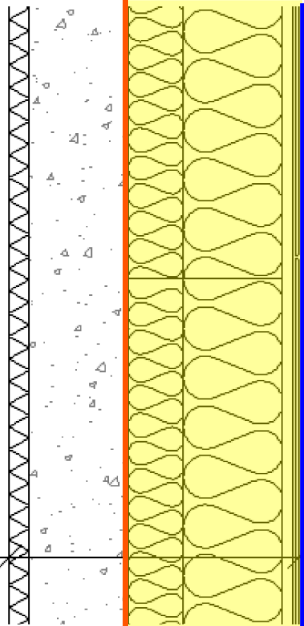
EXISTING



1 STEP

VÄGG UTFRÅN:

- 7 TUNNFILMSSOLCELL (MONTERINGSSYSTEM ENL BB)
- 5 EPDM-REMSA
- SYSTEM ROCKWOOL REDAir -
- 27 LÄKT 27x97
- 250 ROCKWOOL REDAir BATTS 600x1000x250
- 150 ROCKWOOL REDAir BATTS 600x1000x150
- BEF KONSTRUKTION -
- 250 BETONG
- 50 PUTSAD ISOLERING



COLOR CODE

- Existing building
- Step 1
- Step 2
- Step 3
- Step 4
- temporary works (in between steps)

Airtight layer  
Water/Windtight layer

DESCRIPTION/CHALLENGES

The existing GF concrete wall was only insulated with 50mm. A two-layered external wall insulation with a ventilated PV-Cell-Facade is added.

